

# Our Pain, Their Gain



## Mountains Destroyed for Coal Shipped Overseas



**NATURAL  
RESOURCES**  
COMMITTEE • DEMOCRATS  
RANKING MEMBER, EDWARD J. MARKEY

**NOTE:** This report has not been officially adopted by the Committee on Natural Resources and may not necessarily reflect the views of its Members.

Released: July 19, 2012



# Our Pain, Their Gain

## Mountains Destroyed for Coal Shipped Overseas

One of the coal industry's favorite ads in recent years displays an orange power cord plugged directly into a piece of coal. The picture is accompanied by words assuring the viewer that coal is cheap, reliable and a key to the nation's domestic energy security. The message for Americans is that coal equals electricity in the United States, and to tamper with that would be to tamper with our way of life.

A more truthful ad would unplug the power cord and replace it with an oceangoing freightliner bound for steel mills and power plants across Europe, South America, China and India.<sup>1</sup> The image of the ship leaving an export terminal would then dissolve into the naked remains of what used to be a majestic Appalachian mountain. As the camera zoomed out to show the buried remains of streams and rivers and hillsides stripped bare by mining, the announcer would tell the viewer about a dramatically changing industry that is depending more and more on exports to survive.

*A growing body of research shows that mountaintop removal mines not only ruin ecosystems but cause cardiovascular disease, cancer, birth defects and poor overall health.*

Coal exports have nearly doubled since 2009 to 107 million tons last year, now accounting for almost 12 percent of U.S. production.<sup>2</sup> Three out of every four tons that are exported come from the Appalachian region,<sup>3</sup> and often this coal is produced by mountaintop removal mining—a devastating practice that has blanketed communities with soot, contaminated drinking water, and destroyed 2,000 miles of streams.

The Democratic staff of the House Natural Resources Committee obtained mine-specific export data that show how many of the region's surface mines, including mountaintop removal mines,

---

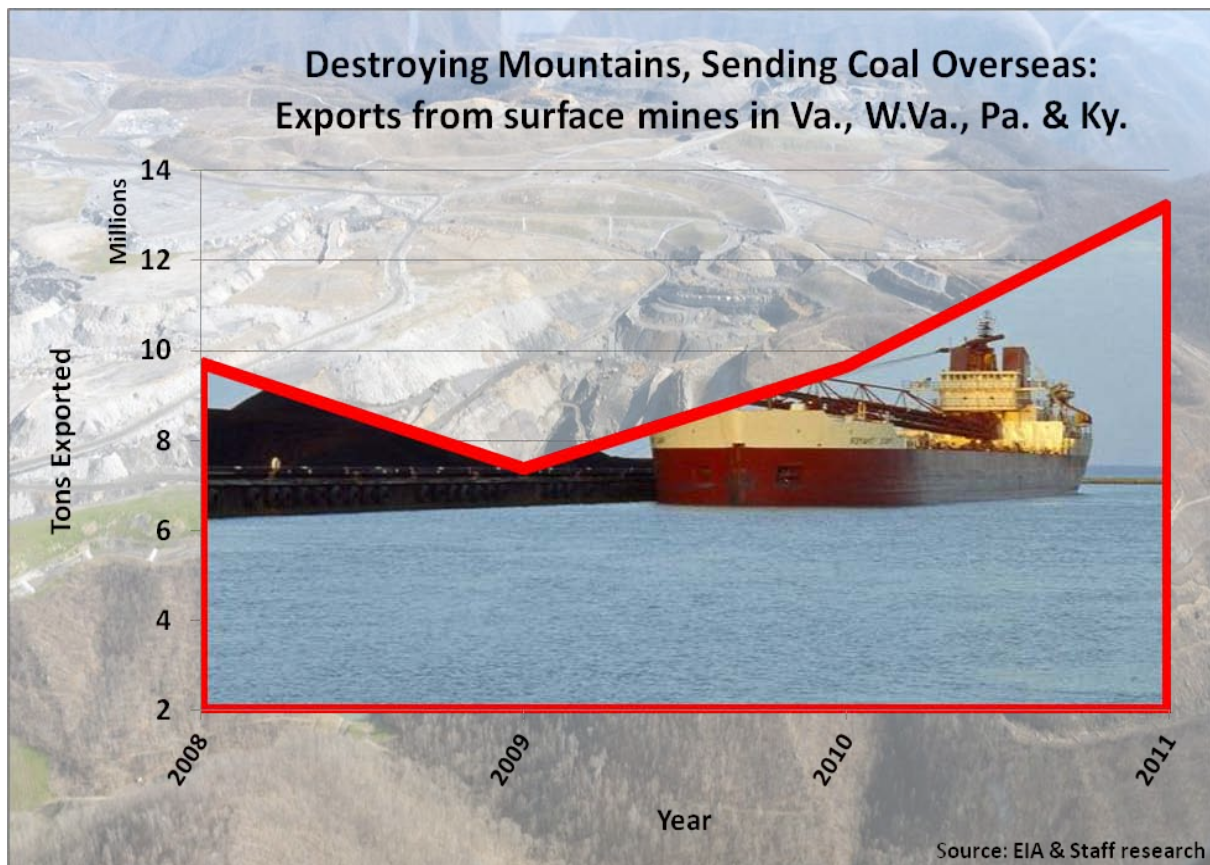
<sup>1</sup> See Appendix A for data on countries importing U.S. coal.

<sup>2</sup> Energy Information Administration, *U.S. Coal Exports by Country of Destination, Annual and U.S. Coal Exports*, (<http://www.eia.gov/coal/data.cfm>)

<sup>3</sup> Energy Information Administration, *U.S. Domestic and Foreign Distribution of Coal by State of Origin, 2010*, ([http://www.eia.gov/coal/distribution/annual/pdf/o\\_10foreign.pdf](http://www.eia.gov/coal/distribution/annual/pdf/o_10foreign.pdf))

have accelerated exports in recent years as the marketplace moves to cheaper and cleaner alternatives to generate electricity.<sup>4</sup> Specifically, the data show:

- Ninety-seven mountaintop removal, steep slope and surface mines in West Virginia, Pennsylvania, Kentucky and Virginia exported American coal overseas in 2011, compared to 73 in 2008.
- Coal exports from surface mines in these four states have grown by 91 percent since 2009 to 13.2 million tons in 2011.
- Twenty-five of these mines exported more than half of their production in 2011. And six of these mines exported nine out of every 10 tons they produced last year.
- Overall, these 97 mines exported 27 percent of their production in 2011. In 2008, mines participating in the export trade sent 13 percent of their production overseas.



<sup>4</sup> See Appendix C for mine-by-mine data from 2008 to 2011.



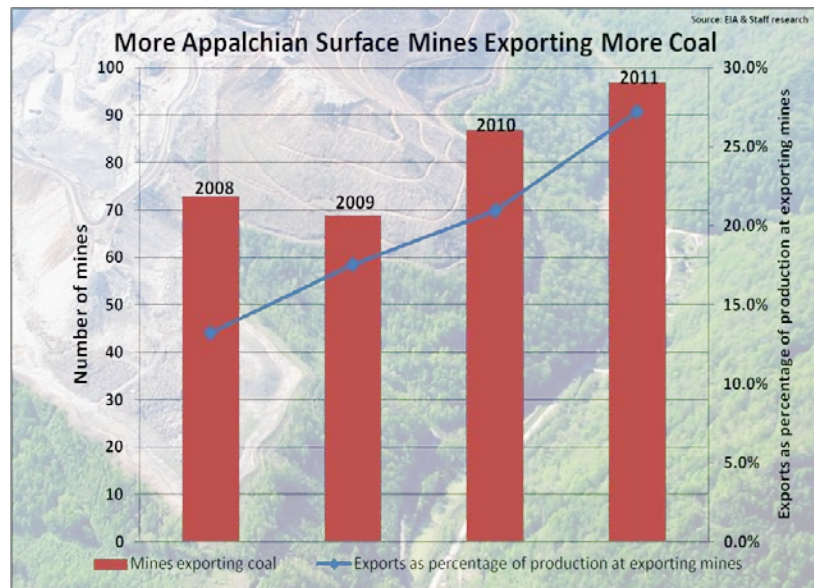
The Energy Information Administration and the U.S. Mine Safety and Health Administration provided the data used for this analysis.<sup>5</sup> The data only include coal sold directly from mines—about three-quarters of total U.S. exports in 2011—and does not include coal exported by third-party trading and brokerage firms such as XCoal<sup>6</sup> that have become major players in U.S. export markets. That means exports from these mines are even higher than what’s reported here.

Falling U.S. demand for coal is driving this spike in exports. U.S. power plants are shifting away from coal in favor of newly abundant supplies of natural gas and clean renewable energy. Six years ago, coal produced half of America’s electricity. Today, it’s down to a little over a third, and still falling. Electricity from natural gas, meanwhile, has grown from 18 percent of U.S. power to 27 percent. And wind has gone from almost nothing to producing 3 percent of our power.

Appalachian mining companies are at a particular disadvantage in this transition because easily accessible reserves have been mined out after a century of intense production. Coal-fired utilities

also prefer lower sulfur coal from Wyoming’s Powder River Basin. However, foreign countries like China, India, and Brazil, which have far weaker clean air standards than the United States, are still ready to buy.

One of Appalachia’s largest mountaintop mining companies, Alpha Natural Resources, recently boasted to investors about selling 16.3 million tons of coal to buyers on five different continents, and having port access that would allow that figure to double.<sup>7</sup> Although the exported coal



<sup>5</sup> The Energy Information Administration (EIA) tabulates mine-specific export and production statistics using a combination self-reporting by mining companies and data from the U.S. Mine Safety and Health Administration (MSHA). Data for 2008 through 2010 has been finalized, while 2011 data is preliminary. The EIA collects export coal data through Form 7A (<http://www.eia.gov/cneaf/coal/page/surveys/formeia7amine.pdf>) and the MSHA collects data through Form 7000-2 (<http://www.msha.gov/forms/7000-2.pdf>)

<sup>6</sup> Based in Baltimore, XCoal sold more than 11 million tons of coal to overseas buyers in 2011, primarily from mines in West Virginia and Pennsylvania (<http://www.xcoal.com/about.php/>)

<sup>7</sup> See Appendix B for Alpha Natural Resources, *presentation to the Fourth Annual Raymond James Conference*, June 19, 2012 ([http://files.shareholder.com/downloads/ALNR/1749576683x0x579683/c0d87b18-82b4-417e-a127-cf00e82f744c/ANR\\_RJ\\_Presentation\\_-\\_FINAL\\_6-19-12.pdf](http://files.shareholder.com/downloads/ALNR/1749576683x0x579683/c0d87b18-82b4-417e-a127-cf00e82f744c/ANR_RJ_Presentation_-_FINAL_6-19-12.pdf))

## Coal's Twilight



**O**ne of Alpha Natural Resources 150-plus mines includes the aptly named Twilight mountaintop removal mine in Boone County, W.Va., shown on the cover of this report. In 2011 alone, this mine exported 442,000 tons of coal with an estimated value of \$40 million or more.

*While Alpha profits from sales abroad, communities have been devastated here at home. After mining began in 1997, neighboring residents grew weary of breathing dust-laden air that is linked to cancer and heart disease. Many opted to sell their properties to the mine's owner, and communities were transformed into ghost towns, as this photo shows.*

*One former resident explained to the New York Times in 2011, "You could wash your car today, and tomorrow you could write your name on it in the dust... It was just unpleasant to live in that town. Period." Another resident was quoted as saying, "And this powder from the mountaintops was settling on everything, turning to brown paste in the rain. People no longer hung their whites on the clotheslines."*

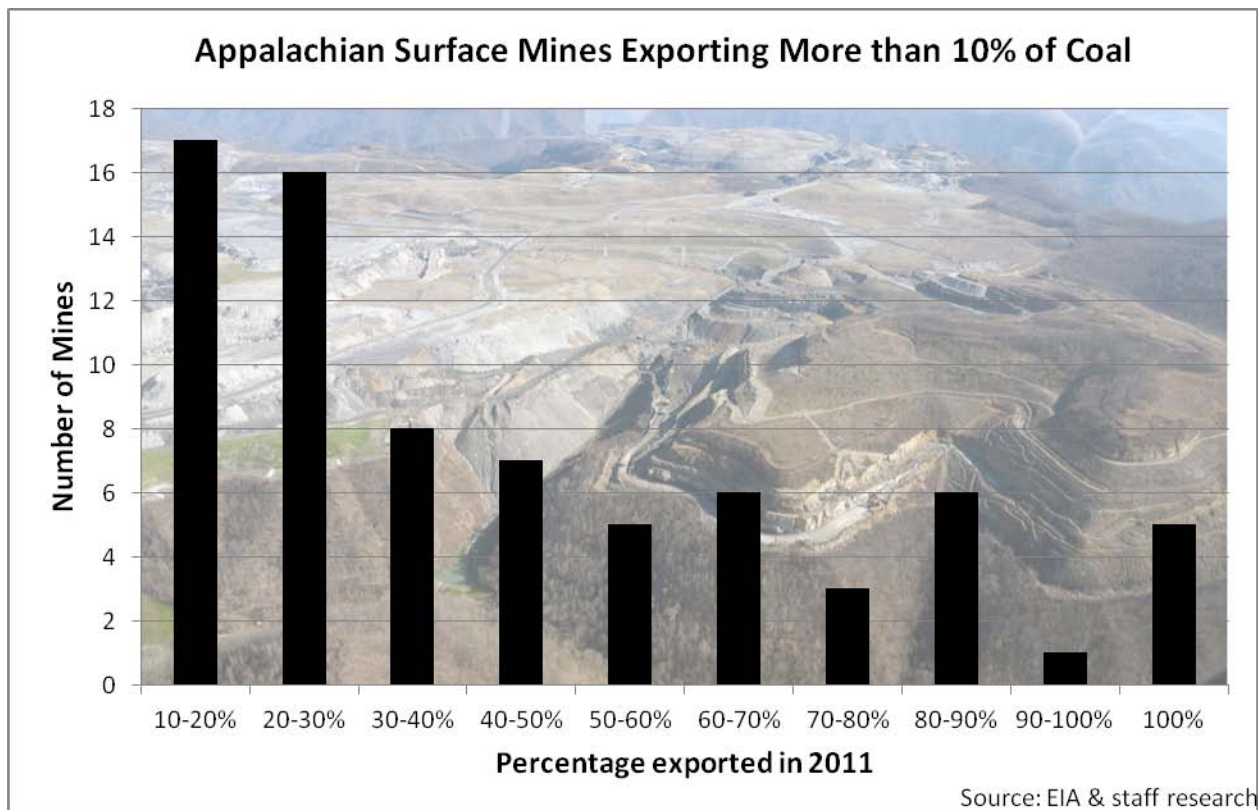
*Alpha also recently agreed to settle a lawsuit brought by environmental groups for nearly \$4.5 million after a judge ruled that selenium levels in a nearby stream violated clean water permits. Before the ruling, the mine owner, a subsidiary of Alpha, persistently denied that its mining discharges were resulting in the toxic selenium levels.*

accounted for just 15 percent of production, high prices on the international market meant that it made up 44 percent or \$3.1 billion of Alpha's revenue last year.

Nearly one out of every three tons sent overseas by Alpha came from 23 mountaintop removal, steep slope and surface mining operations in West Virginia, Kentucky and Virginia. All told, these 23 mines exported nearly 25 percent of their production, according to data reviewed by the committee's Democratic staff. (For more, see "Coal's Twilight.")

Smaller and lesser-known companies with mountaintop removal mines in Appalachia are also engaged in the lucrative export market. For example:

- Southern Coal Corporation's Strip #12 mine in Wise County, Va. exported more than 80 percent of the coal it produced last year.
- Mechel OAO, a Russian corporation, shipped nearly 83 percent of the coal produced from three mines in southern West Virginia.



- TECO Energy shipped more than 219,000 tons of coal from three mines in Kentucky, accounting for 16 percent of their production.
- Severstal, another Russian company, shipped 699,000 tons of coal from Mine No. 1, nearly half of the coal produced by the mine in Somerset County, Pa.

A growing body of research shows how mines like these not only ruin ecosystems<sup>8</sup> but cause cardiovascular disease,<sup>9</sup> cancer,<sup>10</sup> birth defects<sup>11</sup> and poor overall health.<sup>12</sup> The Department of

<sup>8</sup> Bernhardt, E.S. and M.A. Palmer. 2011. "The environmental costs of mountaintop mining valley fill operations for aquatic ecosystems of the Central Appalachians." *Annals of the New York Academy of Sciences*, Vol. 1223, pages 39-57.

<sup>9</sup> Esch, L. and M. Hendryx. 2011. "Chronic Cardiovascular Disease Mortality in Mountaintop Mining Areas of Central Appalachian States." *Journal of Rural Health*, Vol. 27, pages 350-357.

<sup>10</sup> Hendryx, M., L. Wolfe, J.H. Luo, and B. Webb. 2012. "Self-reported cancer rates in two rural areas of West Virginia with and without mountaintop coal mining." *Journal of Community Health*, Vol. 37, page 320-327.

<sup>11</sup> Ahern, M.M., M. Hendryx, J. Conley, E. Fedorko, A. Ducatman and K.J. Zullig. 2011. "The association between mountaintop mining and birth defects among live births in central Appalachia, 1996-2003." *Environmental Research*, Vol. 111, pages 838-846.

<sup>12</sup> Zullig, K.J. and M. Hendryx. 2011. "Health-Related Quality of Life Among Central Appalachian Residents in Mountaintop Mining Counties." *American Journal of Public Health*, Vol. 101, pages 848-853.

Interior's Office of Surface Mining (OSM) is now evaluating options for a new Stream Protection Rule that would protect Appalachian communities from the consequences of mountaintop removal mining.

As this rulemaking goes forward, we would do well to remember: While mountaintop removal mines are happy to sell to the highest foreign bidder, it's the Appalachian people who are paying the steepest price for this coal that America no longer uses.



# **Appendix A**

## Appendix A: 2011 U.S. Coal Exports

**Table 7. U.S. Coal Exports**  
(Short Tons)

Continent and Country of Destination	January - March 2012	October - December 2011	January - March 2011	Year to Date		
				2012	2011	Percent Change
<b>North America Total</b> .....	<b>1,761,872</b>	<b>3,240,640</b>	<b>960,524</b>	<b>1,761,872</b>	<b>960,524</b>	<b>83.4</b>
Canada <sup>1</sup> .....	1,074,532	2,272,034	564,693	1,074,532	564,693	90.3
Dominican Republic .....	188,021	57,217	319	188,021	319	NM
Honduras .....	33,963	30,347	-	33,963	-	-
Jamaica .....	33,585	5,512	24,251	33,585	24,251	38.5
Mexico .....	430,314	832,370	301,250	430,314	301,250	42.8
Panama .....	904	40,686	44,458	904	44,458	-98.0
Other <sup>2</sup> .....	553	2,474	25,553	553	25,553	-97.8
<b>South America Total</b> .....	<b>2,337,667</b>	<b>2,600,873</b>	<b>2,752,987</b>	<b>2,337,667</b>	<b>2,752,987</b>	<b>-15.1</b>
Argentina .....	50,408	108,973	97,455	50,408	97,455	-48.3
Brazil .....	1,862,332	1,805,717	2,239,126	1,862,332	2,239,126	-16.8
Chile .....	421,675	683,676	410,929	421,675	410,929	2.6
Peru .....	109	256	439	109	439	-75.2
Other <sup>2</sup> .....	3,143	2,251	5,038	3,143	5,038	-37.6
<b>Europe Total</b> .....	<b>16,359,777</b>	<b>14,444,421</b>	<b>12,712,564</b>	<b>16,359,777</b>	<b>12,712,564</b>	<b>28.7</b>
Austria .....	163,956	84,875	76,078	163,956	76,078	115.5
Belgium .....	737,842	1,030,851	635,148	737,842	635,148	16.2
Croatia .....	153,010	443,400	539,432	153,010	539,432	-71.6
Denmark .....	-	-	84,689	-	84,689	-
Finland .....	50,468	-	86,844	50,468	86,844	-41.9
France .....	954,416	1,222,838	851,824	954,416	851,824	12.0
Germany, Federal Republic of .....	1,542,714	1,826,364	1,445,818	1,542,714	1,445,818	6.7
Iceland .....	15,547	22,524	17,900	15,547	17,900	-13.1
Ireland .....	229	209	166,918	229	166,918	-99.9
Italy .....	2,533,242	1,409,248	1,126,956	2,533,242	1,126,956	124.8
Latvia .....	310,425	329,612	121,119	310,425	121,119	156.3
Netherlands .....	3,909,058	2,647,411	2,308,742	3,909,058	2,308,742	69.3
Norway .....	11,427	27,710	38,827	11,427	38,827	-70.6
Poland .....	324,864	338,609	332,733	324,864	332,733	-2.4
Portugal .....	322,092	334,526	243,631	322,092	243,631	32.2
Romania .....	334,120	-	423,328	334,120	423,328	-21.1
Slovakia .....	118,333	-	54,108	118,333	54,108	118.7
Slovenia .....	201,634	173,633	233,840	201,634	233,840	-13.8
Spain .....	378,837	564,854	554,814	378,837	554,814	-31.7
Sweden .....	44,959	228,304	60,861	44,959	60,861	-26.1
Switzerland .....	93,891	29,299	71,182	93,891	71,182	31.9
Turkey .....	1,100,967	471,488	926,775	1,100,967	926,775	18.8
Ukraine .....	1,002,580	1,312,914	1,040,404	1,002,580	1,040,404	-3.6
United Kingdom .....	2,054,919	1,935,423	1,269,277	2,054,919	1,269,277	61.9
Other <sup>2</sup> .....	247	10,329	1,316	247	1,316	-81.2
<b>Asia Total</b> .....	<b>7,020,668</b>	<b>6,693,686</b>	<b>8,698,665</b>	<b>7,020,668</b>	<b>8,698,665</b>	<b>-19.3</b>
China .....	2,001,035	1,570,032	2,053,644	2,001,035	2,053,644	-2.6
India .....	1,474,171	1,107,067	1,226,395	1,474,171	1,226,395	20.2
Japan .....	1,429,807	1,463,754	2,818,020	1,429,807	2,818,020	-49.3
Korea, South .....	1,847,310	2,537,074	2,593,824	1,847,310	2,593,824	-28.8
Saudi Arabia .....	35,864	13,453	144	35,864	144	NM
Other <sup>2</sup> .....	232,481	2,306	6,638	232,481	6,638	NM
<b>Australia and Oceania Total</b> .....	<b>545</b>	<b>7</b>	<b>166,141</b>	<b>545</b>	<b>166,141</b>	<b>-99.7</b>
Australia .....	545	7	166,141	545	166,141	-99.7
<b>Africa Total</b> .....	<b>1,161,169</b>	<b>699,651</b>	<b>1,326,276</b>	<b>1,161,169</b>	<b>1,326,276</b>	<b>-12.4</b>
Egypt .....	164,863	27	407,318	164,863	407,318	-59.5
Morocco .....	846,358	698,354	841,926	846,358	841,926	0.5
South Africa .....	149,723	945	77,026	149,723	77,026	94.4
Other <sup>2</sup> .....	225	325	6	225	6	NM
<b>Total</b> .....	<b>28,641,698</b>	<b>27,679,278</b>	<b>26,617,157</b>	<b>28,641,698</b>	<b>26,617,157</b>	<b>7.6</b>

<sup>1</sup> Based on the U.S. -Canada Free Trade Agreement; as of January 1990, the U.S. Department of Commerce began reporting statistics on U.S. exports to Canada based on information on imports provided monthly by the Canadian government.

<sup>2</sup> Includes countries with coal exports less than or equal to 50,000 short tons in 2011.

- = No data are reported.

NM = Not meaningful due to changes of 500 percent or more.

Note: • Total may not equal sum of components because of independent rounding.

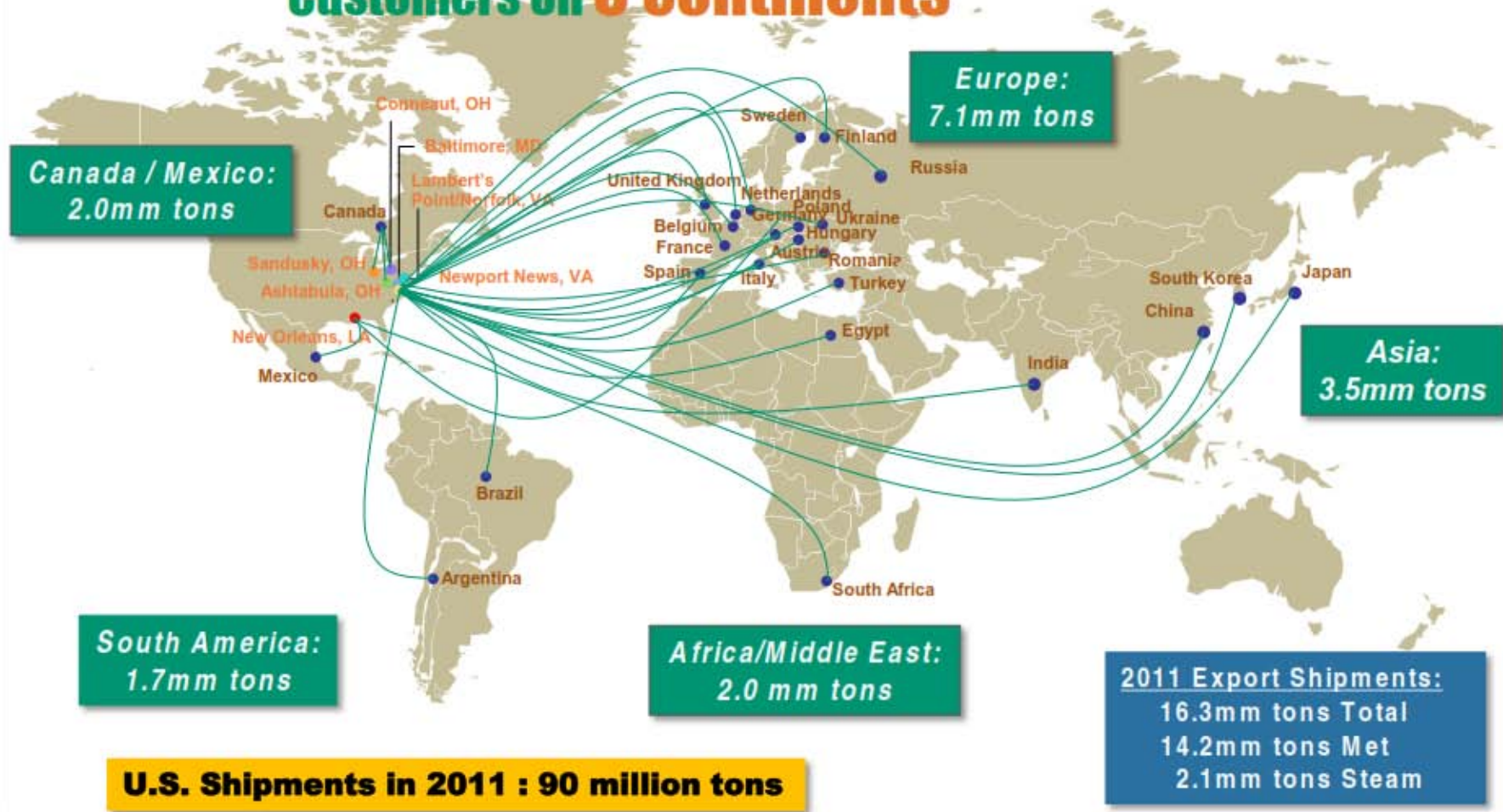
Source: • Bureau of the Census, U.S. Department of Commerce, "Monthly Report EM 545."

# Appendix B



# Leading Global Supplier

## Customers on 5 continents



Note: includes Massey from 6/1/11 forward

Appendix B: Industry Export Documents

Appendix

Table 4: Current/Projected Port Capacity

Port	Location	Current Capacity
Ridley Terminal	West Coast (CA)	2.0
Westshore Terminal	West Coast (CA)	4.0
Millenium Bulk Terminal	West Coast	-
Gateway Terminal (SSA Marine)	West Coast	-
Other	West Coast	-
<b>Total</b>	<b>West Coast</b>	<b>6.0</b>
Deepwater Terminal	Southwest	4.5
Other Texas	Southwest	-
<b>Total</b>	<b>Southwest</b>	<b>4.5</b>
International Marine Terminal	Gulf Coast	6.0
United Bulk Terminal	Gulf Coast	17.0
Burnside Terminal (Impla)	Gulf Coast	-
IC Rail Marine Terminal (Convent)	Gulf Coast	3.5
Mid-Streaming	Gulf Coast	10.0
<b>Total</b>	<b>Gulf Coast</b>	<b>36.5</b>
Lamberts Point	East Coast	38.0
Dominion Terminal Associates	East Coast	19.0
CNX Marine	East Coast	13.0
Pier IX	East Coast	12.0
Fairless Hills, PA Terminal	East Coast	-
CSX Curtis Bay (Chesapeake)	East Coast	4.5
<b>Total</b>	<b>East Coast</b>	<b>86.5</b>
Ashtabula Coal Pier (Great Lakes)	Midwest	7.0
Sandusky Dock (Great Lakes)	Midwest	7.0
<b>Total</b>	<b>Midwest</b>	<b>14.0</b>
Port of Mobile	Southeast	10.0
Shipyards River Terminal (SRT), Charleston	Southeast	-
Other AL	Southeast	-
<b>Total</b>	<b>Southeast</b>	<b>10.0</b>
<b>TOTAL</b>		<b>157.5</b>

Port	Location	Projected Capacity (2016)
Ridley Terminal	West Coast (CA)	4.0
Westshore Terminal	West Coast (CA)	4.0
Millenium Bulk Terminal	West Coast	15.0
Gateway Terminal (SSA Marine)	West Coast	15.0
Other	West Coast	12.0
<b>Total</b>	<b>West Coast</b>	<b>50.0</b>
Deepwater Terminal	Southwest	10.0
Other Texas	Southwest	5.0
<b>Total</b>	<b>Southwest</b>	<b>15.0</b>
International Marine Terminal	Gulf Coast	17.0
United Bulk Terminal	Gulf Coast	11.0
Burnside Terminal (Impla)	Gulf Coast	10.0
IC Rail Marine Terminal (Convent)	Gulf Coast	8.0
Mid-Streaming	Gulf Coast	20.0
<b>Total</b>	<b>Gulf Coast</b>	<b>66.0</b>
Lamberts Point	East Coast	32.0
Dominion Terminal Associates	East Coast	20.0
CNX Marine	East Coast	16.0
Pier IX	East Coast	14.0
Fairless Hills, PA Terminal	East Coast	9.0
CSX Curtis Bay (Chesapeake)	East Coast	9.0
<b>Total</b>	<b>East Coast</b>	<b>100.0</b>
Ashtabula Coal Pier (Great Lakes)	Midwest	7.0
Sandusky Dock (Great Lakes)	Midwest	7.0
<b>Total</b>	<b>Midwest</b>	<b>14.0</b>
Port of Mobile	Southeast	18.0
Shipyards River Terminal (SRT), Charleston	Southeast	8.0
Other AL	Southeast	5.0
<b>Total</b>	<b>Southeast</b>	<b>31.0</b>
<b>TOTAL</b>		<b>276.0</b>

Source: UBS, ACI reports, ANR reports, port websites/reports



## Opportunities in the Atlantic Basin are promising

**570 million tonnes**  
by 2020

Atlantic Basin



- As South African, Russian and Colombian coals increasingly serve coal demand in Asia, there is a meaningful opportunity for U.S. coal to fill the supply gap in the Atlantic Basin
- We expect European imports to increase 150 million tonnes from 2011 to 2020, and South American imports to grow by 50 million tonnes





## Appendix C: Mine-by-mine export & production data (2011)

# Appendix C

The following tables are compiled from data and mine ownership information that the Democratic staff of the Natural Resources Committee obtained from the Energy Information Administration (EIA) and the U.S. Mine Safety and Health Administration (MSHA). The production and export data from 2008, 2009 and 2010 has been finalized by EIA, while MSHA provided provisional data for 2011.

It is important to note that export information for each year only captures what was reported by individual mines. The two agencies use annual and quarterly forms to collect production and export data that is self-reported information by mine operators. The forms do not attempt to account for export tons sold by brokerage and trading firms, which made up nearly one-fourth of the U.S. export trade in 2011.

Committee staff has not attempted to correct or alter the data, only to present it in a more usable form for the public. As such, readers will find two data limitations: first, that approximately two dozen of the more than 300 mines do not match publically available data on MSHA's Data Retrieval System. Second, there are four mines that reported export figures higher than production for the given year. We cannot explain these obvious errors, as they were self-reported by mines to executive branch agencies.

The data has been sorted first by year, then alphabetically by state and finally by greatest percentage of production being exported. For each mine, information is provided on the current operator and controller as of July 13, 2012; surface production (in tons); exports (in tons); county in which the mine resides; and a mine identification number assigned by MSHA.

**Appendix C: Mine-by-mine export & production data (2011)**

STATE	COUNTY	MSHA ID	MINE	OPERATOR	CONTROLLER	SURFACE PRODUCTION	EXPORTS	EXPORT %
KY	Pike	1519475	Beech Creek Surface Mine	Kentucky Fuel Corporation	James C Justice II	161,014	64,931	40.33%
KY	Pike	1517280	No 1	Apex Energy Inc	James H Booth	63,873	18,506	28.97%
KY	Pike	1518713	No 009	C W Augering Inc	James H Booth	47,369	13,724	28.97%
KY	Pike	1517941	No 2	Apex Energy Inc	James H Booth	216,747	62,797	28.97%
KY	Pike	1518931	No 7	Apex Energy Inc	James H Booth	144,534	41,875	28.97%
KY	Pike	1518363	Bevins Branch Surface Mine	Kentucky Fuel Corporation	James C Justice II	337,626	90,520	26.81%
KY	Pike	1517799	S-4 Netley Branch	Revelation Energy, LLC	Jeffery A Hoops	35,231	9,247	26.25%
KY	Pike	1518823	Job #42	Premier Elkhorn Coal Company	TECO Energy Inc	484,860	89,570	18.47%
KY	Pike	1518946	Job #49	Premier Elkhorn Coal Company	TECO Energy Inc	274,391	49,170	17.92%
KY	Pike	1518015	Bent Mtn	Kentucky Fuel Corporation	James C Justice II	411,031	63,256	15.39%
KY	Floyd	1519372	Blackhawk #1 Surface Mine	Blackhawk Mining LLC	Thomas A Potter; John M Potter	437,840	61,481	14.04%
KY	Pike	1518784	Job #45	Premier Elkhorn Coal Company	TECO Energy Inc	617,748	80,353	13.01%
KY	Floyd	1519588	Blackhawk #4 Surface Mine	Blackhawk Mining LLC	Thomas A Potter; John M Potter	53,278	6,674	12.53%
KY	Floyd	1518998	Blackhawk #2 Surface Mine	Blackhawk Mining LLC	Thomas A Potter; John M Potter	149,963	17,578	11.72%
KY	Pike	1518029	No 2	C W Augering Inc	James H Booth	54,913	6,316	11.50%
KY	Harlan	1518687	Liggett #1	Liggett Mining LLC	James C Justice II	46,054	4,149	9.01%
KY	Pike	1518280	S-1 Hunts Branch	Revelation Energy LLC	Jeffery A Hoops	712,137	53,930	7.57%
KY	Harlan	1518889	Harlan Strip #1	Four Star Resources LLC	James C Justice II	190,056	13,143	6.92%
KY	Perry	1518048	Rowdy Gap Mine	ICG Hazard, LLC	Arch Coal Inc	836,379	48,505	5.80%
KY	Leslie	1517746	Thunder Ridge Mine	ICG Hazard, LLC	Arch Coal Inc	594,816	33,248	5.59%



**Appendix C: Mine-by-mine export & production data (2011)**

STATE	COUNTY	MSHA ID	MINE	OPERATOR	CONTROLLER	SURFACE PRODUCTION	EXPORTS	EXPORT %
KY	Knott	1519416	Bearville	ICG Hazard, LLC	Arch Coal Inc	528,355	26,017	4.92%
KY	Perry	1518966	East Mac & Nellie	ICG Hazard, LLC	Arch Coal Inc	1,044,070	49,014	4.69%
KY	Martin	1519070	Mount Sterling Branch	ICG East Kentucky LLC	Arch Coal Inc	509,678	10,920	2.14%
KY	Knott	1519189	Big Branch West Surface Mine	Enterprise Mining Co LLC	Alpha Natural Resources, Inc.	823,199	14,890	1.81%
KY	Letcher	1519411	Job 55	Premier Elkhorn Coal Company	TECO Energy Inc	90,703	264	0.29%
KY	Pike	1517789	No 3	Apex Energy Inc	James H Booth	94,534	190	0.20%
KY	Pike	1519145	No 8	Apex Energy Inc	James H Booth	356,513	716	0.20%
KY	Pike	1518040	No. 6	Apex Energy Inc	James H Booth	470,720	945	0.20%
PA	Clearfield	3609604	Res Houtzdale	RES Coal LLC	Robindale Energy Services Inc	56,120	69,267	123.43%
PA	Armstrong	3609840	Allegheny Strips	Rosebud Mining Company	J Clifford Forrest III	27,305	27,306	100.00%
PA	Clearfield	3608750	Bell Resources, Inc	Bell Resources, Inc	Shad B Spencer	45,625	40,613	89.01%
PA	Luzerne	3601734	Jeddo Basin (J-44)	Jeddo Coal Company	Pagnotti Enterprises Inc	83,135	63,772	76.71%
PA	Clearfield	3600884	River Hill Coal Co., Inc.	River Hill Coal Company Inc	Harry J Hanchar	217,309	139,938	64.40%
PA	Clearfield	3606586	Waroquier #1	Waroquier Coal, Inc.	Joseph L Waroquier	193,235	122,163	63.22%
PA	Clearfield	3609605	Res Morrisdale	RES Coal LLC	Robindale Energy Services Inc	107,208	65,093	60.72%
PA	Schuylkill	3601761	Tamaqua Mine	Lehigh Anthracite Coal, LLC	Robindale Energy Services Inc	141,975	74,459	52.45%
PA	Somerset	3609888	Wilson Creek Surface Mines	Wilson Creek Energy LLC	Corsa Coal Corporation	127,795	66,010	51.65%
PA	Somerset	3603328	Mine No 1	PBS Coals, Inc.	Citicorp Venture Capital Ltd	1,426,536	699,666	49.05%
PA	Lycoming	3602703	Fisher Mining Company	Fisher Mining Company	John A Blaschak	222,813	83,950	37.68%

**Appendix C: Mine-by-mine export & production data (2011)**

STATE	COUNTY	MSHA ID	MINE	OPERATOR	CONTROLLER	SURFACE PRODUCTION	EXPORTS	EXPORT %
PA	Clearfield	3609603	Res Shawville	RES Coal LLC	Robindale Energy Services Inc	186,993	60,830	32.53%
PA	Clearfield	3608163	Hoover Job	Junior Coal Contracting Incorporated	George Cowfer Jr	168,706	51,553	30.56%
PA	Clearfield	3602725	Shane Mine	Hepburnia Coal Company Inc	Darrell G Spencer	82,331	21,438	26.04%
PA	Jefferson	3607341	Acosta Mine	Falls Creek Energy Company Inc	Tammy L Kijowski; Frank S Schall	167,601	40,352	24.08%
PA	Cambria	3608398	Epb Strip	E P Bender Coal Company	Martha A Bender	246,584	36,403	14.76%
VA	Wise	4407001	Strip #14	A & G Coal Corporation	James C Justice II	259,341	259,341	100.00%
VA	Wise	4407115	Baden #1	A & G Coal Corporation	James C Justice II	70,267	70,267	100.00%
VA	Dickenson	4407034	No 1 Strip	Virginia Fuel Corporation	James C Justice II	159,792	159,791	100.00%
VA	Wise	4406992	Strip #12	A & G Coal Corporation	James C Justice II	498,533	412,195	82.68%
VA	Wise	4407201	Job #15 Surface	A & G Coal Corporation	James C Justice II	51,157	41,685	81.48%
VA	Lee	4406869	Sigmon Strip #23	A & G Coal Corporation	James C Justice II	33,114	22,011	66.47%
VA	Wise	4407232	South Fork	Paramont Coal Company Virginia, LLC	Alpha Natural Resources, Inc.	310,636	194,225	62.52%
VA	Dickenson	4407272	Smith Gap Surface Mine	Paramont Coal Company Virginia, LLC.	Alpha Natural Resources, Inc.	171,626	102,010	59.44%
VA	Wise	4407163	88 Strip	Paramont Coal Company Virginia LLC	Alpha Natural Resources, Inc.	476,845	280,526	58.83%
VA	Wise	4406544	Sawmill Hollow #1	A & G Coal Corporation	James C Justice II	173,253	88,784	51.25%
VA	Wise	4407160	Preacher Creek Strip	A & G Coal Corporation	James C Justice II	87,696	37,482	42.74%

**Appendix C: Mine-by-mine export & production data (2011)**

STATE	COUNTY	MSHA ID	MINE	OPERATOR	CONTROLLER	SURFACE PRODUCTION	EXPORTS	EXPORT %
VA	Russell	4407281	Kennedy #3 Surface	Knox Creek Coal Corp	Alpha Natural Resources, Inc.	120,582	49,445	41.01%
VA	Wise	4407190	Red Onion Surface Mine	Paramont Coal Company Virginia LLC	Alpha Natural Resources, Inc.	227,159	85,941	37.83%
VA	Wise	4407246	Strip #24	A & G Coal Corporation	James C Justice II	41,194	13,644	33.12%
VA	Buchanan	4403658	No 2 Surface	Twin Star Mining, Inc.	Alpha Natural Resources, Inc.	242,583	78,660	32.43%
VA	Wise	4406999	Strip #13	A & G Coal Corporation	James C Justice II	98,866	27,449	27.76%
VA	Buchanan	4407180	Hurricane Branch Strip #1	Knox Creek Coal Corp.	Alpha Natural Resources, Inc.	39,437	9,948	25.23%
VA	Lee	4407253	Darby Road Mine #1	Virginia Fuels Corporation	James C Justice II	197,873	41,657	21.05%
VA	Buchanan	4406949	Lovers Gap #3	Paramont Coal Company Virginia LLC	Alpha Natural Resources, Inc.	112,209	11,643	10.38%
VA	Buchanan	4407257	Butcher Knife Surface Mine	Paramont Coal Company Virginia LLC	Alpha Natural Resources, Inc.	122,750	9,224	7.51%
WV	Mcdowell	4606578	Red Fox Surface Mine	Justice Energy Company Inc	Mechel Oao	751,359	723,021	96.23%
WV	Wyoming	4608684	No 34 Mine	Bluestone Coal Corporation	Mechel Oao	78,697	68,245	86.72%
WV	Wyoming	4609062	Coal Mountain No 1 Surface	Dynamic Energy Inc	Mechel Oao	1,426,611	1,185,374	83.09%
WV	Webster	4609036	Seven Pines	Brooks Run Mining Company LLC	Alpha Natural Resources, Inc.	1,110,595	920,222	82.86%
WV	Raleigh	4609026	Ewing Fork No. 1 Surface Mine	Simmons Fork Mining, Inc.	Alpha Natural Resources, Inc.	1,001,537	735,097	73.40%
WV	Lincoln	4609120	Mine 5	Coal River Mining LLC	James O Bunn; Franklin D Robertson	361,930	253,912	70.16%
WV	Boone	4609286	Mine No 6	Coal River Mining LLC	James O Bunn; Franklin D Robertson	795,448	542,185	68.16%

**Appendix C: Mine-by-mine export & production data (2011)**

STATE	COUNTY	MSHA ID	MINE	OPERATOR	CONTROLLER	SURFACE PRODUCTION	EXPORTS	EXPORT %
WV	Logan	4609101	Toney Fork Surface Mine	Cliffs Logan County Coal, LLC	Cliffs Natural Resources Inc	1,219,753	607,860	49.83%
WV	Mcdowell	4603404	No 32 Mine	Bluestone Coal Corporation	Mechel Oao	236,512	101,647	42.98%
WV	Greenbrier	4609292	Buck Lilly Surface Mine	West Virginia Mine Power, Inc.	John B Preece	88,887	35,585	40.03%
WV	Mingo	4607545	Mine No 1	Premium Energy LLC	Alpha Natural Resources, Inc.	1,035,204	375,319	36.26%
WV	Raleigh	4609376	Slip Ridge Contour	Marfork Coal Company	Alpha Natural Resources, Inc.	41,158	12,801	31.10%
WV	Mcdowell	4608990	No. 39 Mine	Bluestone Coal Corporation	Mechel Oao	125,859	36,620	29.10%
WV	Logan	4609089	Camp Branch Mine	Rum Creek Coal Sales	Alpha Natural Resources, Inc.	772,959	182,462	23.61%
WV	Logan	4608693	Freeze Fork Surface Mine	Highland Mining Company	Alpha Natural Resources, Inc.	689,166	159,960	23.21%
WV	Fayette	4609105	Surface No 5	Frasure Creek Mining LLC	Essar Group	818,533	178,801	21.84%
WV	Fayette	4609054	Republic Energy	Elk Run Coal Co	Alpha Natural Resources, Inc.	2,342,170	506,316	21.62%
WV	Raleigh	4609176	Beetree Surface Mine	Marfork Coal Company	Alpha Natural Resources, Inc.	624,785	123,419	19.75%
WV	Logan	4608984	Coal-Mac Inc Holden #22 Surfac	Phoenix Coal-Mac Mining Inc	Arch Coal Inc	2,981,368	543,063	18.22%
WV	Mingo	4607165	North Surface Mine	Alex Energy Inc	Alpha Natural Resources, Inc.	605,300	109,122	18.03%
WV	Greenbrier	4609246	Midland Trail Surface Mine No.	West Virginia Mine Power, Inc.	John B Preece	250,280	43,987	17.58%
WV	Fayette	4607491	S-7 Surface Mine	Revelation Energy, LLC	Jeffery A Hoops	329,157	57,323	17.42%
WV	Boone	4608645	Twilight Mtr Surface Mine	Progress Coal	Alpha Natural Resources, Inc.	3,168,486	442,301	13.96%
WV	Boone	4607938	Black Castle Mining Co	Elk Run Coal Co.	Alpha Natural Resources, Inc.	2,814,522	332,856	11.83%
WV	Fayette	4607058	Huffman Surface Mine No 1 and S	Maple Coal Co.	Walter Energy Incorporated	581,562	48,386	8.32%

**Appendix C: Mine-by-mine export & production data (2011)**

STATE	COUNTY	MSHA ID	MINE	OPERATOR	CONTROLLER	SURFACE PRODUCTION	EXPORTS	EXPORT %
WV	Clay	4608377	Surface Mine No 2	Fola Coal Company LLC	CONSOL Energy Inc	2,164,842	164,234	7.59%
WV	Logan	4608973	Wv-3 Surface Mine	Kentucky Fuel Corporation	James C Justice II	152,103	9,395	6.18%
WV	Raleigh	4608977	Edwight Surface Mine	Alex Energy Inc	Alpha Natural Resources, Inc.	1,262,808	58,170	4.61%
WV	Nicholas	4606870	No 1 Surface	Alex Energy Inc	Alpha Natural Resources, Inc.	1,634,563	55,200	3.38%
WV	Webster	4607945	Birch River Mine	ICG Eastern LLC	Arch Coal Inc	940,059	25,957	2.76%
WV	Nicholas	4609220	Bearpen Surface Mine	ICG Eastern LLC	Arch Coal Inc	358,732	7,631	2.13%
WV	Nicholas	4608675	Crooked Run Surface Mine	Atlantic Leaseco, LLC	Walter Energy Incorporated	653,299	13,665	2.09%
WV	Monongalia	4607654	Patriot Mining Company Inc	Patriot Mining Company Inc	Arch Coal Inc	512,844	8,579	1.67%



**Appendix C: Mine-by-mine export & production data (2010)**

STATE	COUNTY	MSHA ID	MINE	OPERATOR	CONTROLLER	SURFACE PRODUCTION	EXPORTS	EXPORT %
KY	Leslie	1519008	Owls Nest Job #8	B & W Resources Inc	Lipari Energy	320,139	335,458	104.79%
KY	Leslie	1519485	Mine #5	Mountain Source Energy, LLC	Clyde Meenach; Suzette Meenach	55,978	55,995	100.03%
KY	Perry	1518781	Chavies Job #7	B & W Resources Inc	Lipari Energy	408,541	396,899	97.15%
KY	Clay	1519503	Mitco Job #12	B&W Resources, Inc.	Lipari Energy	101,502	81,384	80.18%
KY	Letcher	1519411	Job 55	Premier Elkhorn Coal Company	TECO Energy Inc	31,179	9,455	30.32%
KY	Pike	1518931	No 7	Apex Energy Inc	James H Booth	197,560	54,908	27.79%
KY	Pike	1517941	No 2	Apex Energy Inc	James H Booth	128,622	35,748	27.79%
KY	Pike	1518713	No 009	C W Augering Inc	James H Booth	44,382	12,335	27.79%
KY	Pike	1517280	No 1	Apex Energy Inc	James H Booth	123,795	34,406	27.79%
KY	Pike	1517360	Pe Southern Pike Co	Premier Elkhorn Coal Company	TECO Energy Inc	12,976	2,755	21.23%
KY	Pike	1518823	Job #42	Premier Elkhorn Coal Company	TECO Energy Inc	527,095	107,771	20.45%
KY	Pike	1518946	Job #49	Premier Elkhorn Coal Company	TECO Energy Inc	258,528	52,228	20.20%
KY	Pike	1518100	Marion Branch	CAM Mining LLC	Rhino Resource Partners LP	166,435	31,074	18.67%
KY	Pike	1518784	Job #45	Premier Elkhorn Coal Company	TECO Energy Inc	886,197	96,051	10.84%
KY	Pike	4407143	Feds Creek #1	Wolf Creek Coal Corp LLC	Fredrick J Murell	47,313	3,589	7.59%
KY	Pike	1517659	Three Mile Mine #1	CAM Mining LLC	Rhino Resource Partners LP	162,064	12,105	7.47%
KY	Leslie	1517746	Thunder Ridge Mine	ICG Hazard, LLC	Arch Coal Inc	646,104	33,493	5.18%
KY	Floyd	1519372	Blackhawk #1 Surface Mine	Blackhawk Mining LLC	Thomas A Potter; John M Potter	226,786	11,344	5.00%
KY	Perry	1518613	Tip Top Mine	ICG Hazard, LLC	Arch Coal Inc	305,289	14,470	4.74%
KY	Knott	1519416	Bearville	ICG Hazard, LLC	Arch Coal Inc	493,269	22,447	4.55%
KY	Perry	1518966	East Mac & Nellie	ICG Hazard, LLC	Arch Coal Inc	1,215,811	53,694	4.42%
KY	Perry	1518048	Rowdy Gap Mine	ICG Hazard, LLC	Arch Coal Inc	771,421	30,986	4.02%

**Appendix C: Mine-by-mine export & production data (2010)**

STATE	COUNTY	MSHA ID	MINE	OPERATOR	CONTROLLER	SURFACE PRODUCTION	EXPORTS	EXPORT %
KY	Pike	1518570	Bevins Branch #1	CAM Mining LLC	Rhino Resource Partners LP	74,636	1,819	2.44%
KY	Pike	1518029	No 2	C W Augering Inc	James H Booth	83,644	1,671	2.00%
KY	Pike	1518040	No. 6	Apex Energy Inc	James H Booth	369,071	7,373	2.00%
KY	Pike	1519145	No 8	Apex Energy Inc	James H Booth	487,381	9,736	2.00%
KY	Pike	1517789	No 3	Apex Energy Inc	James H Booth	61,286	1,224	2.00%
KY	Knott	1519189	Big Branch West Surface Mine	Enterprise Mining Co LLC	Alpha Natural Resources, Inc.	914,731	13,194	1.44%
KY	Leslie	1519098	Wolf Creek Surface #3	T & T Energy LLC	Amy C Hamilton	89,077	846	0.95%
PA	Clearfield	3609604	Res Houtzdale	RES Coal LLC	Robindale Energy Services Inc	50,126	78,977	157.56%
PA	Armstrong	3609840	Allegheny Strips	Rosebud Mining Company	J Clifford Forrest III	35,303	35,303	100.00%
PA	Clearfield	3608750	Bell Resources, Inc	Bell Resources, Inc	Shad B Spencer	42,632	41,475	97.29%
PA	Westmoreland	3609057	Shearer Mine	Albert F. Stiffler	Albert F Stiffler	50,531	39,413	78.00%
PA	Clearfield	3609605	Res Morrisdale	RES Coal LLC	Robindale Energy Services Inc	96,784	71,977	74.37%
PA	Luzerne	3601734	Jeddo Basin (J-44)	Jeddo Coal Company	Pagnotti Enterprises Inc	79,067	49,610	62.74%
PA	Somerset	3602773	Shaw	Rosebud Mining Company	J Clifford Forrest III	116,181	66,981	57.65%
PA	Clearfield	3606586	Waroquier #1	Waroquier Coal, Inc.	Joseph L Waroquier	168,977	96,654	57.20%
PA	Lycoming	3602703	Fisher Mining Company	Fisher Mining Company	John A Blaschak	251,818	119,115	47.30%
PA	Clearfield	3600884	River Hill Coal Co., Inc.	River Hill Coal Company Inc	Harry J Hanchar	262,544	95,290	36.29%
PA	Clearfield	3609603	Res Shawville	RES Coal LLC	Robindale Energy Services Inc	94,759	29,257	30.88%
PA	Clearfield	3602725	Shane Mine	Hepburnia Coal Company Inc	Darrell G Spencer	97,112	24,245	24.97%

**Appendix C: Mine-by-mine export & production data (2010)**

STATE	COUNTY	MSHA ID	MINE	OPERATOR	CONTROLLER	SURFACE PRODUCTION	EXPORTS	EXPORT %
PA	Somerset	3606438	Hoffman No 1	Hoffman Mining Inc	Donald R Hoffman	224,510	46,820	20.85%
PA	Cambria	3608398	Epb Strip	E P Bender Coal Company	Martha A Bender	235,072	21,703	9.23%
VA	Dickenson	4407115	Baden #1	A & G Coal Corporation	James C Justice II	166,501	92,147	55.34%
VA	Wise	4407163	88 Strip	Paramont Coal Company Virginia LLC	Alpha Natural Resources, Inc.	432,690	219,144	50.65%
VA	Buchanan	4407180	Hurricane Branch Strip #1	Knox Creek Coal Corp.	Alpha Natural Resources, Inc.	174,643	85,816	49.14%
VA	Buchanan	4403658	No 2 Surface	Twin Star Mining, Inc.	Alpha Natural Resources, Inc.	195,105	72,815	37.32%
VA	Wise	4407001	Strip #14	A & G Coal Corporation	James C Justice II	347,329	117,383	33.80%
VA	Wise	4406992	Strip #12	A & G Coal Corporation	James C Justice II	509,997	160,967	31.56%
VA	Wise	4407190	Red Onion Surface Mine	Paramont Coal Company Virginia LLC	Alpha Natural Resources, Inc.	403,653	119,769	29.67%
VA	Wise	4407232	South Fork	Paramont Coal Company Virginia, LLC	Alpha Natural Resources, Inc.	181,638	27,970	15.40%
VA	Buchanan	4406949	Lovers Gap #3	Paramont Coal Company Virginia LLC	Alpha Natural Resources, Inc.	510,536	47,822	9.37%
WV	Wyoming	4608582	Paynter Branch Surface Mine	Simmons Fork Mining Incorporated	Alpha Natural Resources, Inc.	163,046	142,229	87.23%
WV	Mcdowell	4606578	Red Fox Surface Mine	Justice Energy Company Inc	Mechel Oao	826,984	680,464	82.28%
WV	Raleigh	4609026	Ewing Fork No. 1 Surface Mine	Simmons Fork Mining, Inc.	Alpha Natural Resources, Inc.	875,017	578,115	66.07%
WV	Wyoming	4609062	Coal Mountain No 1 Surface	Dynamic Energy Inc	Mechel Oao	1,366,804	841,667	61.58%
WV	Webster	4609036	Seven Pines	Brooks Run Mining Company LLC	Alpha Natural Resources, Inc.	1,057,625	611,800	57.85%
WV	Fayette	4607491	S-7 Surface Mine	Revelation Energy, LLC	Jeffery A Hoops	178,819	97,217	54.37%
WV	Logan	4609101	Toney Fork Surface Mine	Cliffs Logan County Coal, LLC	Cliffs Natural Resources Inc	1,125,887	574,044	50.99%

**Appendix C: Mine-by-mine export & production data (2010)**

STATE	COUNTY	MSHA ID	MINE	OPERATOR	CONTROLLER	SURFACE PRODUCTION	EXPORTS	EXPORT %
WV	Mcdowell	4608990	No. 39 Mine	Bluestone Coal Corporation	Mechel Oao	396,611	167,241	42.17%
WV	Lincoln	4609120	Mine 5	Coal River Mining LLC	James O Bunn; Franklin D Robertson	665,070	277,812	41.77%
WV	Wyoming	4608684	No 34 Mine	Bluestone Coal Corporation	Mechel Oao	183,596	59,856	32.60%
WV	Boone	4609286	Mine No 6	Coal River Mining LLC	James O Bunn; Franklin D Robertson	80,289	25,067	31.22%
WV	Raleigh	4609176	Beetree Surface Mine	Marfork Coal Company	Alpha Natural Resources, Inc.	503,391	138,072	27.43%
WV	Raleigh	4608716	Tams	Kentucky Fuel Corporation	James C Justice II	46,285	11,167	24.13%
WV	Fayette	4609105	Surface No 5	Frasure Creek Mining LLC	Essar Group	650,669	148,548	22.83%
WV	Greenbrier	4609246	Midland Trail Surface Mine No. 1	West Virginia Mine Power, Inc.	John B Preece	165,912	32,319	19.48%
WV	Fayette	4607058	Huffman Surface Mine No 1 and SM	Maple Coal Co.	Walter Energy Incorporated	417,212	65,542	15.71%
WV	Mingo	4607545	Mine No 1	Premium Energy LLC	Alpha Natural Resources, Inc.	1,170,301	176,398	15.07%
WV	Raleigh	4609376	Slip Ridge Contour	Marfork Coal Company	Alpha Natural Resources, Inc.	20,969	3,108	14.82%
WV	Logan	4608984	Coal-Mac Inc Holden #22 Surfac	Phoenix Coal-Mac Mining Inc	Arch Coal Inc	2,781,470	404,681	14.55%
WV	Raleigh	4608977	Edwight Surface Mine	Alex Energy Inc	Alpha Natural Resources, Inc.	1,214,978	173,209	14.26%
WV	Mingo	4608930	Grapevine South Surface Mine	CAM Mining LLC	Rhino Resource Partners LP	406,351	54,793	13.48%
WV	Logan	4609089	Camp Branch Mine	Rum Creek Coal Sales	Alpha Natural Resources, Inc.	464,215	53,243	11.47%
WV	Boone	4608645	Twilight Mtr Surface Mine	Progress Coal	Alpha Natural Resources, Inc.	3,041,342	316,798	10.42%

**Appendix C: Mine-by-mine export & production data (2010)**

STATE	COUNTY	MSHA ID	MINE	OPERATOR	CONTROLLER	SURFACE PRODUCTION	EXPORTS	EXPORT %
WV	Fayette	4609054	Republic Energy	Elk Run Coal Co	Alpha Natural Resources, Inc.	3,147,578	312,680	9.93%
WV	Mcdowell	4603404	No 32 Mine	Bluestone Coal Corporation	Mechel Oao	21,154	1,878	8.88%
WV	Nicholas	4608675	Crooked Run Surface Mine	Atlantic Leaseco, LLC	Walter Energy Incorporated	617,248	52,653	8.53%
WV	Mingo	4607165	North Surface Mine	Alex Energy Inc	Alpha Natural Resources, Inc.	620,117	46,720	7.53%
WV	Boone	4607938	Black Castle Mining Co	Elk Run Coal Co.	Alpha Natural Resources, Inc.	2,940,052	163,864	5.57%
WV	Clay	4608377	Surface Mine No 2	Fola Coal Company LLC	CONSOL Energy Inc	1,572,254	54,414	3.46%
WV	Monongalia	4607654	Patriot Mining Company Inc	Wolf Creek Coal Corp LLC	Fredrick J Murell	695,448	18,482	2.66%
WV	Mingo	4607695	Lower Pete Branch Alma Mine	Patriot Mining Company Inc	Arch Coal Inc	249,887	6,367	2.55%
WV	Boone	4609070	Boone North No. 2 Surface Mine	Raven Crest Contracting, LLC	Boone North No. 2 Surface Mine	524,592	11,735	2.24%
WV	Nicholas	4606870	No 1 Surface	Alex Energy Inc	Alpha Natural Resources, Inc.	1,983,986	35,735	1.80%
WV	Webster	4607945	Birch River Mine	ICG Eastern LLC	Arch Coal Inc	1,657,120	27,161	1.64%
WV	Kanawha	4608906	Rush Creek Surface Mine	Keystone Development	Thomas Scholl	216,665	1,737	0.80%



**Appendix C: Mine-by-mine export & production data (2009)**

STATE	COUNTY	MSHA ID	MINE	OPERATOR	CONTROLLER	SURFACE PRODUCTION	EXPORTS	EXPORT %
KY	Harlan	1518093	Vfc - Darty Gap	Virginia Fuel Corporation	James C Justice II	112,955	105,656	93.54%
KY	Pike	4608964	Feds Creek #1	Wolf Creek Coal Corp LLC	Fredrick J Murell	28,885	11,858	41.05%
KY	Pike	1519362	#2 Surface Mine	Appalachian Contractors Inc	Shelly B Mullins	12,065	4,505	37.34%
KY	Pike	1518950	Fraleley Branch Surface Mine	Sidney Coal Company, Inc.	Alpha Natural Resources, Inc.	370,527	45,024	12.15%
KY	Pike	1517941	No 2	Apex Energy Inc	James H Booth	155,497	12,435	8.00%
KY	Pike	1517280	No 1	Apex Energy Inc	James H Booth	125,824	10,062	8.00%
KY	Pike	1518713	No 009	C W Augering Inc	James H Booth	92,400	7,389	8.00%
KY	Pike	1518931	No 7	Apex Energy Inc	James H Booth	119,399	9,548	8.00%
KY	Pike	1518823	Job #42	Premier Elkhorn Coal Company	TECO Energy Inc	549,264	34,019	6.19%
KY	Pike	1518946	Job #49	Premier Elkhorn Coal Company	TECO Energy Inc	254,177	15,511	6.10%
KY	Perry	1517751	County Line Mine	ICG Hazard, LLC	Arch Coal Inc	55,242	2,025	3.67%
KY	Pike	1518784	Job #45	Premier Elkhorn Coal Company	TECO Energy Inc	859,252	28,522	3.32%
KY	Perry	1518181	Vicco Mine	ICG Hazard, LLC	Arch Coal Inc	159,240	4,585	2.88%
KY	Perry	1518613	Tip Top Mine	ICG Hazard, LLC	Arch Coal Inc	440,000	11,779	2.68%
KY	Perry	1518048	Rowdy Gap Mine	ICG Hazard, LLC	Arch Coal Inc	705,022	18,453	2.62%
KY	Leslie	1517746	Thunder Ridge Mine	ICG Hazard, LLC	Arch Coal Inc	641,891	16,557	2.58%
KY	Perry	1518966	East Mac & Nellie	ICG Hazard, LLC	Arch Coal Inc	1,303,206	32,789	2.52%
KY	Martin	1519235	Mtr Wolf Creek Mine	Martin County Coal Corp	Alpha Natural Resources, Inc.	541,765	8,791	1.62%
KY	Martin	1511005	Mtr Surface Mine	Martin County Coal Corp	Alpha Natural Resources, Inc.	249,517	3,324	1.33%
KY	Knott	1519189	Big Branch West Surface Mine	Enterprise Mining Co LLC	Alpha Natural Resources, Inc.	954,780	719	0.08%
PA	Fayette	3609057	Shearer Mine	Albert F. Stiffler	Albert F Stiffler	31,627	31,627	100.00%
PA	Clearfield	3608750	Bell Resources, Inc	Bell Resources, Inc	Shad B Spencer	35,781	31,731	88.68%

**Appendix C: Mine-by-mine export & production data (2009)**

STATE	COUNTY	MSHA ID	MINE	OPERATOR	CONTROLLER	SURFACE PRODUCTION	EXPORTS	EXPORT %
PA	Clearfield	3609604	Res Houtzdale	RES Coal LLC	Robindale Energy Services Inc	37,704	29,412	78.01%
PA	Luzerne	3601734	Jeddo Basin (J-44)	Jeddo Coal Company	Pagnotti Enterprises Inc	55,665	38,056	68.37%
PA	Lycoming	3602703	Fisher Mining Company	Fisher Mining Company	John A Blaschak	244,535	76,951	31.47%
PA	Clearfield	3606586	Waroquier #1	Waroquier Coal, Inc.	Joseph L Waroquier	152,902	46,160	30.19%
PA	Clearfield	3609605	Res Morrisdale	RES Coal LLC	Robindale Energy Services Inc	111,007	32,369	29.16%
PA	Clearfield	3600884	River Hill Coal Co., Inc.	River Hill Coal Company Inc	Harry J Hanchar	254,166	71,096	27.97%
PA	Somerset	3602773	Shaw	Rosebud Mining Company	J Clifford Forrest III	108,514	16,143	14.88%
PA	Clearfield	3602725	Shane Mine	Hepburnia Coal Company Inc	Darrell G Spencer	91,505	9,700	10.60%
PA	Clearfield	3609603	Res Shawville	RES Coal LLC	Robindale Energy Services Inc	128,716	3,103	2.41%
VA	Buchanan	4403658	No 2 Surface	Twin Star Mining, Inc.	Alpha Natural Resources, Inc.	205,775	48,161	23.40%
VA	Buchanan	4407180	Hurricane Branch Strip #1	Knox Creek Coal Corp.	Alpha Natural Resources, Inc.	23,121	4,035	17.45%
VA	Wise	4407163	88 Strip	Paramont Coal Company Virginia LLC	Alpha Natural Resources, Inc.	431,077	68,560	15.90%
VA	Russell	4407244	Hess Creek Surface Mine	Knox Creek Coal Corporation	Alpha Natural Resources, Inc.	191,612	30,018	15.67%
VA	Wise	4407190	Red Onion Surface Mine	Paramont Coal Company Virginia LLC	Alpha Natural Resources, Inc.	534,907	68,560	12.82%
VA	Buchanan	4406949	Lovers Gap #3	Paramont Coal Company Virginia LLC	Alpha Natural Resources, Inc.	538,749	42,541	7.90%
VA	Dickenson	4407115	Baden #1	A & G Coal Corporation	James C Justice II	145,686	10,510	7.21%

**Appendix C: Mine-by-mine export & production data (2009)**

STATE	COUNTY	MSHA ID	MINE	OPERATOR	CONTROLLER	SURFACE PRODUCTION	EXPORTS	EXPORT %
VA	Pike	4407143	Feds Creek #1	Wolf Creek Coal Corp LLC	Fredrick J Murell	61,620	1,195	1.94%
WV	Mcdowell	4609024	No 1 Miner	Justice Highwall Mining Inc	Mechel Oao	10,089	51,176	507.25%
WV	Kanawha	4608906	Rush Creek Surface Mine	Keystone Development	Thomas Scholl	292,321	289,306	98.97%
WV	Mcdowell	4605741	Cactus Ridge Surface Mine	Extra Energy, Inc.	ArcelorMittal	551,961	500,000	90.59%
WV	Mcdowell	4606578	Red Fox Surface Mine	Justice Energy Company Inc	Mechel Oao	649,878	489,582	75.33%
WV	Mcdowell	4608990	No. 39 Mine	Bluestone Coal Corporation	Mechel Oao	155,311	105,680	68.04%
WV	Mcdowell	4609197	Big Branch Highwall Mine	Justice Highwall Mining, Inc.	Mechel Oao	79,895	51,176	64.05%
WV	Logan	4608838	Superior Surface Mine	White Flame Energy Inc	Alpha Natural Resources, Inc.	306,750	160,708	52.39%
WV	Lincoln	4609120	Mine 5	Coal River Mining LLC	James O Bunn; Franklin D Robertson	636,302	300,667	47.25%
WV	Raleigh	4609026	Ewing Fork No. 1 Surface Mine	Simmons Fork Mining, Inc.	Alpha Natural Resources, Inc.	634,758	249,190	39.26%
WV	Wyoming	4608582	Paynter Branch Surface Mine	Simmons Fork Mining Incorporated	Alpha Natural Resources, Inc.	175,370	67,187	38.31%
WV	Fayette	4607491	S-7 Surface Mine	Revelation Energy, LLC	Jeffery A Hoops	245,566	82,819	33.73%
WV	Boone	4608683	Red Cedar Surface Mine	Endurance Mining	Alpha Natural Resources, Inc.	326,867	106,794	32.67%
WV	Raleigh	4608977	Edwight Surface Mine	Alex Energy Inc	Alpha Natural Resources, Inc.	1,416,484	417,046	29.44%
WV	Boone	4608645	Twilight Mtr Surface Mine	Progress Coal	Alpha Natural Resources, Inc.	4,953,903	1,444,180	29.15%
WV	Mingo	4607695	Lower Pete Branch Alma Mine	Chafin Branch Coal Co LLC	James River Coal Company	164,409	43,923	26.72%
WV	Greenbrier	4609246	Midland Trail Surface Mine No.	West Virginia Mine Power, Inc.	John B Preece	199,855	51,933	25.99%
WV	Mingo	4607165	North Surface Mine	Alex Energy Inc	Alpha Natural Resources, Inc.	396,794	99,193	25.00%

**Appendix C: Mine-by-mine export & production data (2009)**

STATE	COUNTY	MSHA ID	MINE	OPERATOR	CONTROLLER	SURFACE PRODUCTION	EXPORTS	EXPORT %
WV	Wyoming	4608684	No 34 Mine	Bluestone Coal Corporation	Mechel Oao	166,363	35,583	21.39%
WV	Mcdowell	4603404	No 32 Mine	Bluestone Coal Corporation	Mechel Oao	27,240	5,118	18.79%
WV	Boone	4607938	Black Castle Mining Co	Elk Run Coal Co.	Alpha Natural Resources, Inc.	2,679,693	475,158	17.73%
WV	Nicholas	4606870	No 1 Surface	Alex Energy Inc	Alpha Natural Resources, Inc.	1,934,286	314,317	16.25%
WV	Fayette	4609054	Republic Energy	Elk Run Coal Co	Alpha Natural Resources, Inc.	3,391,102	480,990	14.18%
WV	Webster	4609036	Seven Pines	Brooks Run Mining Company LLC	Alpha Natural Resources, Inc.	1,069,448	129,181	12.08%
WV	Mingo	4607545	Mine No 1	Premium Energy LLC	Alpha Natural Resources, Inc.	1,133,198	66,524	5.87%
WV	Clay	4608377	Surface Mine No 2	Fola Coal Company LLC	CONSOL Energy Inc	2,511,454	142,819	5.69%
WV	Nicholas	4608675	Crooked Run Surface Mine	Atlantic Leaseco, LLC	Walter Energy Incorporated	482,452	27,232	5.64%
WV	Logan	4608984	Coal-Mac Inc Holden #22 Surfac	Phoenix Coal-Mac Mining Inc	Arch Coal Inc	2,648,669	103,384	3.90%
WV	Fayette	4607058	Huffman Surface Mine No 1 and S	Maple Coal Co.	Walter Energy Incorporated	239,579	8,583	3.58%
WV	Webster	4607945	Birch River Mine	ICG Eastern LLC	Arch Coal Inc	2,500,172	42,447	1.70%
WV	Logan	4609089	Camp Branch Mine	Rum Creek Coal Sales	Alpha Natural Resources, Inc.	967,886	2,685	0.28%

**Appendix C: Mine-by-mine export & production data (2008)**

STATE	COUNTY	MSHA ID	MINE	OPERATOR	CONTROLLER	SURFACE PRODUCTION	EXPORTS	EXPORT %
KY	Johnson	1519244	Red Bush #1	Red Bush Coal, LLC	A Bruce Addington; Erik Addington	24,468	24,468	100.00%
KY	Pike	1518928	No.1	Why Knot, Inc.	Ron Runyon	21,789	4,700	21.57%
KY	Pike	1517360	Pe Southern Pike Co	Premier Elkhorn Coal Company	TECO Energy Inc	149,428	31,374	21.00%
KY	Pike	1518823	Job #42	Premier Elkhorn Coal Company	TECO Energy Inc	562,572	101,010	17.96%
KY	Pike	1518946	Job #49	Premier Elkhorn Coal Company	TECO Energy Inc	266,644	47,569	17.84%
KY	Pike	1519243	Job 52	Premier Elkhorn Coal Company	TECO Energy Inc	75,809	12,385	16.34%
KY	Perry	1515506	Middle Fork Surface	ICG Hazard, LLC	Arch Coal Inc	577,786	72,326	12.52%
KY	Perry	1518613	Tip Top Mine	ICG Hazard, LLC	Arch Coal Inc	186,632	23,184	12.42%
KY	Pike	1518784	Job #45	Premier Elkhorn Coal Company	TECO Energy Inc	421,018	48,821	11.60%
KY	Perry	1518181	Vicco Mine	ICG Hazard, LLC	Arch Coal Inc	325,239	37,266	11.46%
KY	Perry	1518048	Rowdy Gap Mine	ICG Hazard, LLC	Arch Coal Inc	756,530	85,719	11.33%
KY	Leslie	1517746	Thunder Ridge Mine	ICG Hazard, LLC	Arch Coal Inc	704,233	78,761	11.18%
KY	Perry	1518966	East Mac & Nellie	ICG Hazard, LLC	Arch Coal Inc	1,074,361	118,244	11.01%
KY	Perry	1517751	County Line Mine	ICG Hazard, LLC	Arch Coal Inc	324,885	34,601	10.65%
KY	Harlan	1518145	Cm&e #3	Cloverfork Mining & Excavating Inc	Benjamin R. Bennett	126,284	6,479	5.13%
KY	Pike	1518015	Bent Mtn	Kentucky Fuel Corporation	James C Justice II	1,072,669	39,851	3.72%
KY	Pike	1518363	Bevins Branch Surface Mine	Kentucky Fuel Corporation	James C Justice II	324,144	7,137	2.20%
KY	Pike	1518950	Fraley Branch Surface Mine	Sidney Coal Company, Inc.	Alpha Natural Resources, Inc.	535,003	6,252	1.17%
PA	Clearfield	3606586	Waroquier #1	Waroquier Coal, Inc.	Joseph L Waroquier	187,906	245,306	130.55%
PA	Schuylkill	3601761	Tamaqua Mine	Lehigh Anthracite Coal, LLC	Robindale Energy Services Inc	43,946	43,174	98.24%

**Appendix C: Mine-by-mine export & production data (2008)**

STATE	COUNTY	MSHA ID	MINE	OPERATOR	CONTROLLER	SURFACE PRODUCTION	EXPORTS	EXPORT %
PA	Fayette	3609057	Shearer Mine	Albert F. Stiffler	Albert F Stiffler	36,723	34,301	93.40%
PA	Luzerne	3601734	Jeddo Basin (J-44)	Jeddo Coal Company	Pagnotti Enterprises Inc	118,973	97,744	82.16%
PA	Somerset	3601527	New Centerville Quarry	New Centerville Stone and Sand Inc	David D Svonavec	60,426	39,990	66.18%
PA	Clearfield	3609604	Res Houtzdale	RES Coal LLC	Robindale Energy Services Inc	94,381	55,599	58.91%
PA	Somerset	3602773	Shaw	Rosebud Mining Company	J Clifford Forrest III	143,096	83,653	58.46%
PA	Clearfield	3600884	River Hill Coal Co., Inc.	River Hill Coal Company Inc	Harry J Hanchar	252,605	92,035	36.43%
PA	Clearfield	3609605	Res Morrisdale	RES Coal LLC	Robindale Energy Services Inc	114,392	30,164	26.37%
PA	Clearfield	3602725	Shane Mine	Hepburnia Coal Company Inc	Darrell G Spencer	150,649	33,293	22.10%
PA	Lycoming	3602703	Fisher Mining Company	Fisher Mining Company	John A Blaschak	256,810	47,160	18.36%
PA	Clearfield	3609603	Res Shawville	RES Coal LLC	Robindale Energy Services Inc	162,290	14,732	9.08%
PA	Cambria	3608398	Epb Strip	E P Bender Coal Company	Martha A Bender	303,861	23,248	7.65%
VA	Buchanan	4403658	No 2 Surface	Twin Star Mining, Inc.	Alpha Natural Resources, Inc.	384,191	213,834	55.66%
VA	Buchanan	4407143	Feds Creek #1	Wolf Creek Coal Corp LLC	Fredrick J Murell	51,988	28,110	54.07%
VA	Wise	4407190	Red Onion Surface Mine	Paramont Coal Company Virginia LLC	Alpha Natural Resources, Inc.	712,979	368,546	51.69%
VA	Buchanan	4407230	No 1	Appalachian Contractors Inc	Shelly B Mullins	16,946	7,050	41.60%
VA	Buchanan	4406949	Lovers Gap #3	Paramont Coal Company Virginia LLC	Alpha Natural Resources, Inc.	619,089	196,049	31.67%

**Appendix C: Mine-by-mine export & production data (2008)**

STATE	COUNTY	MSHA ID	MINE	OPERATOR	CONTROLLER	SURFACE PRODUCTION	EXPORTS	EXPORT %
VA	Dickenson	4407115	Baden #1	A & G Coal Corporation	James C Justice II	157,278	47,477	30.19%
VA	Wise	4407163	88 Strip	Paramont Coal Company Virginia LLC	Alpha Natural Resources, Inc.	399,336	103,566	25.93%
VA	Wise	4406992	Strip #12	A & G Coal Corporation	James C Justice II	347,085	46,264	13.33%
WV	Mcdowell	4603404	No 32 Mine	Bluestone Coal Corporation	Mechel Oao	44,552	42,529	95.46%
WV	Boone	4609120	Mine 5	Coal River Mining LLC	James O Bunn; Franklin D Robertson	364,727	259,850	71.25%
WV	Fayette	4607491	S-7 Surface Mine	Revelation Energy, LLC	Jeffery A Hoops	209,370	140,030	66.88%
WV	Kanawha	4608964	Feds Creek #1	Wolf Creek Coal Corp LLC	Fredrick J Murell	145,656	85,144	58.46%
WV	Wyoming	4609062	Coal Mountain No 1 Surface	Dynamic Energy Inc	Mechel Oao	829,328	430,377	51.89%
WV	Mingo	4607165	North Surface Mine	Alex Energy Inc	Alpha Natural Resources, Inc.	332,798	164,643	49.47%
WV	Mcdowell	4609197	Big Branch Highwall Mine	Justice Highwall Mining, Inc.	Mechel Oao	134,366	55,141	41.04%
WV	Mcdowell	4606578	Red Fox Surface Mine	Justice Energy Company Inc	Mechel Oao	706,322	286,913	40.62%
WV	Logan	4608838	Superior Surface Mine	White Flame Energy Inc	Alpha Natural Resources, Inc.	1,506,902	532,906	35.36%
WV	Raleigh	4609026	Ewing Fork No. 1 Surface Mine	Simmons Fork Mining, Inc.	Alpha Natural Resources, Inc.	1,128,041	387,819	34.38%
WV	Fayette	4607537	Fourmile Fork Surface Mine	Alex Energy Inc.	Alpha Natural Resources, Inc.	131,134	44,766	34.14%
WV	Raleigh	4609096	Pocahontas Highwall Mines	Pocahontas Coal Company, LLC	Metinvest B V	275,649	88,763	32.20%
WV	Boone	4608818	Callisto Mine	Thunderhill Coal, LLC	Patriot Coal Corporation	44,917	11,975	26.66%
WV	Nicholas	4608675	Crooked Run Surface Mine	Atlantic Leaseco, LLC	Walter Energy Incorporated	324,017	84,902	26.20%



**Appendix C: Mine-by-mine export & production data (2008)**

STATE	COUNTY	MSHA ID	MINE	OPERATOR	CONTROLLER	SURFACE PRODUCTION	EXPORTS	EXPORT %
WV	Wyoming	4608582	Paynter Branch Surface Mine	Simmons Fork Mining Incorporated	Alpha Natural Resources, Inc.	430,780	106,081	24.63%
WV	Boone	4607938	Black Castle Mining Co	Elk Run Coal Co.	Alpha Natural Resources, Inc.	3,106,650	682,528	21.97%
WV	Mingo	4607545	Mine No 1	Premium Energy LLC	Alpha Natural Resources, Inc.	1,348,854	296,104	21.95%
WV	Nicholas	4606870	No 1 Surface	Alex Energy Inc	Alpha Natural Resources, Inc.	2,667,227	511,490	19.18%
WV	Boone	4608683	Red Cedar Surface Mine	Endurance Mining	Alpha Natural Resources, Inc.	894,210	166,296	18.60%
WV	Clay	4608377	Surface Mine No 2	Fola Coal Company LLC	CONSOL Energy Inc	3,309,609	589,234	17.80%
WV	Webster	4607945	Birch River Mine	ICG Eastern LLC	Arch Coal Inc	3,232,163	531,921	16.46%
WV	Boone	4608549	West Cazy Surface Mine	Endurance Mining	Alpha Natural Resources, Inc.	197,473	30,911	15.65%
WV	Logan	4609089	Camp Branch Mine	Rum Creek Coal Sales	Alpha Natural Resources, Inc.	1,169,120	153,709	13.15%
WV	Logan	4609101	Toney Fork Surface Mine	Cliffs Logan County Coal, LLC	Cliffs Natural Resources Inc	1,454,589	181,923	12.51%
WV	Webster	4609036	Seven Pines	Brooks Run Mining Company LLC	Alpha Natural Resources, Inc.	1,209,150	148,744	12.30%
WV	Fayette	4609054	Republic Energy	Elk Run Coal Co	Alpha Natural Resources, Inc.	2,664,902	280,689	10.53%
WV	Boone	4608645	Twilight Mtr Surface Mine	Progress Coal	Alpha Natural Resources, Inc.	5,167,254	519,233	10.05%
WV	Mcdowell	4608990	No. 39 Mine	Bluestone Coal Corporation	Mechel Oao	197,720	19,466	9.85%
WV	Wyoming	4608684	No 34 Mine	Bluestone Coal Corporation	Mechel Oao	315,539	30,865	9.78%
WV	Mingo	4608698	Coal Mac #68 Surface	Phoenix Coal-Mac Mining Inc	Arch Coal Inc	2,472,308	145,716	5.89%
WV	Mingo	4609138	Mt-11 Surface Mine	Eagle Creek Mining LLC	John M Potter; Thomas A Potter	697,607	39,193	5.62%
WV	Kanawha	4608906	Rush Creek Surface Mine	Keystone Development	Thomas Scholl	300,589	14,323	4.76%

**Appendix C: Mine-by-mine export & production data (2008)**

STATE	COUNTY	MSHA ID	MINE	OPERATOR	CONTROLLER	SURFACE PRODUCTION	EXPORTS	EXPORT %
WV	Logan	4608693	Freeze Fork Surface Mine	Highland Mining Company	Alpha Natural Resources, Inc.	941,148	25,993	2.76%
WV	Logan	4608263	Tower Mountain	Bandmill Coal Corp	Alpha Natural Resources, Inc.	399,901	8,651	2.16%

